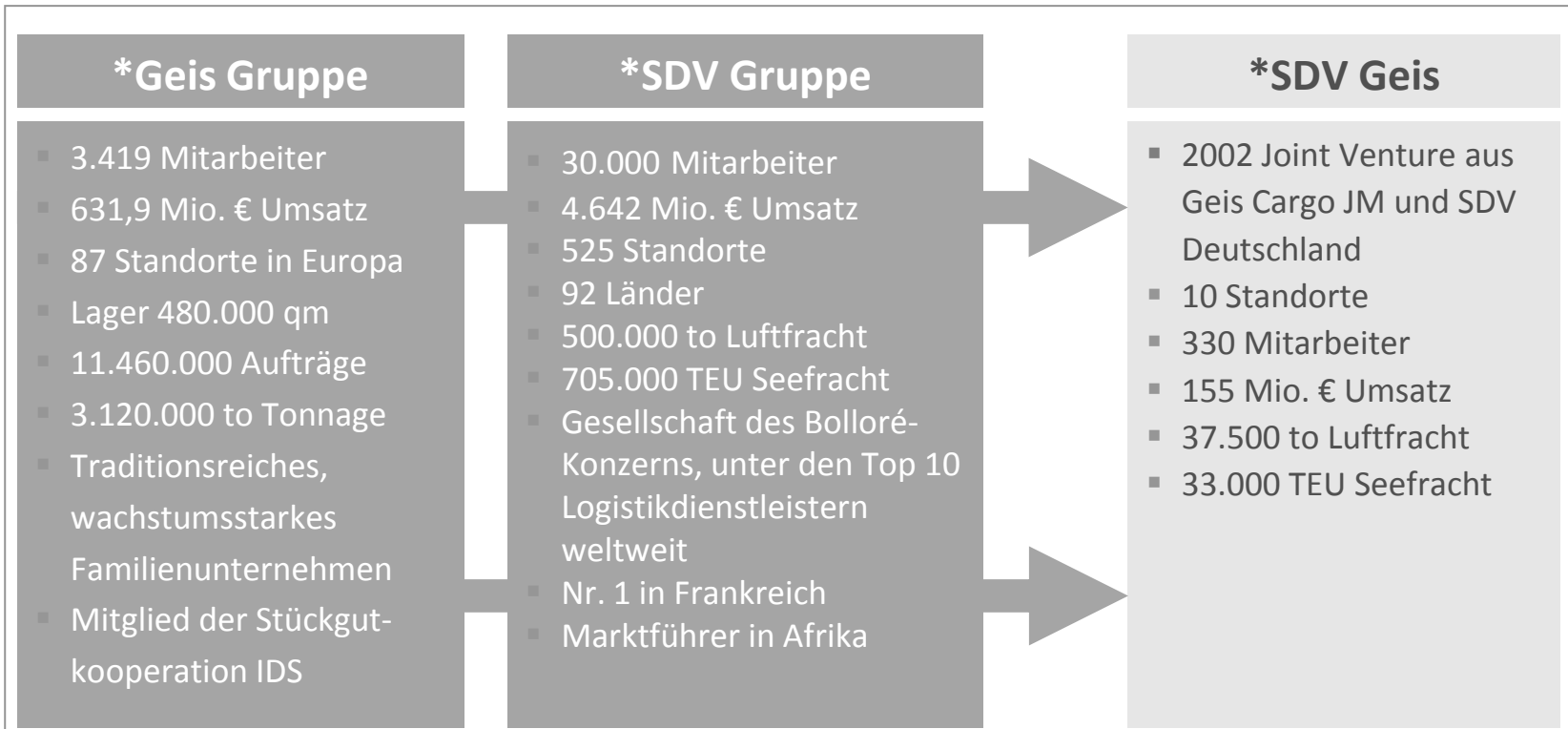




Logistics. Imagination.

SDV Projects



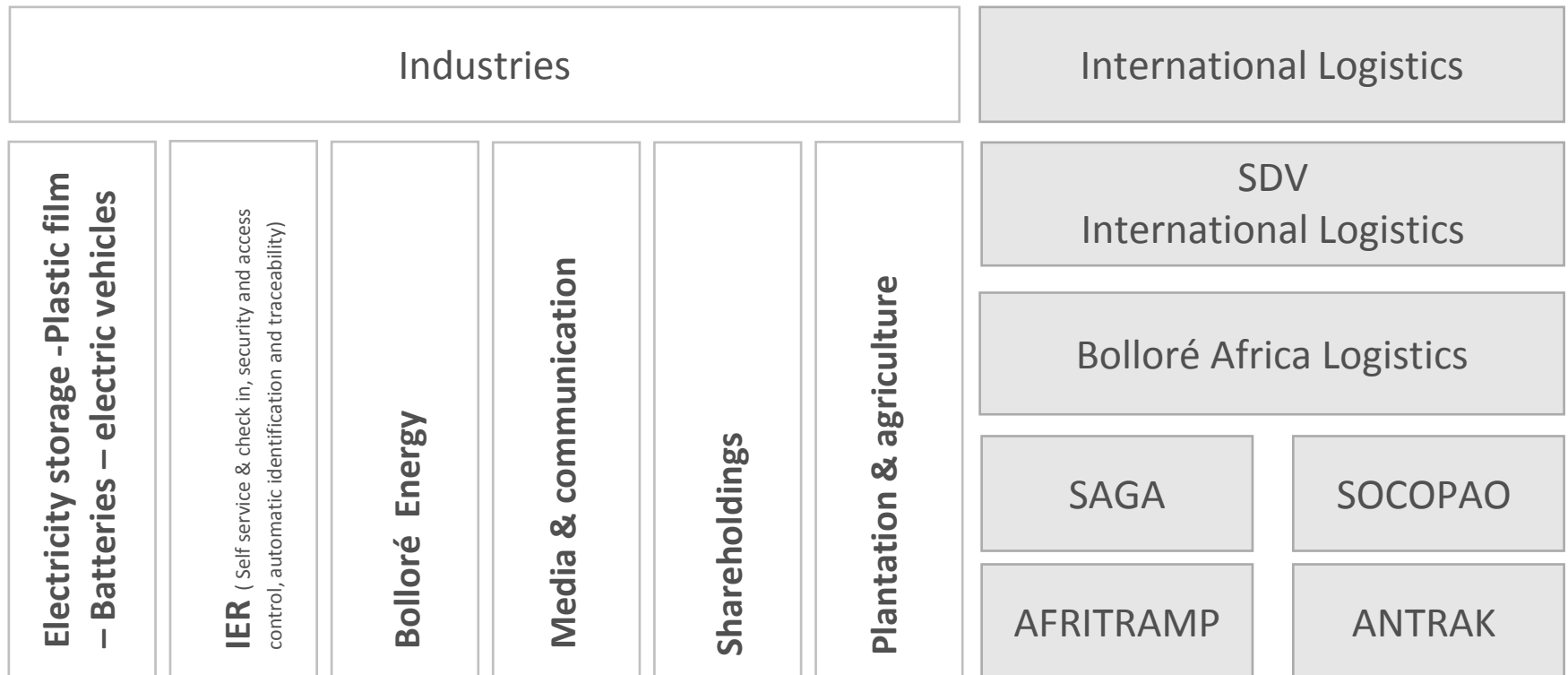
SDV Geis GmbH = Kundennähe durch Mittelstand in Deutschland + weltweites Netzwerk eines Konzerns

* Stand 31.12.2010

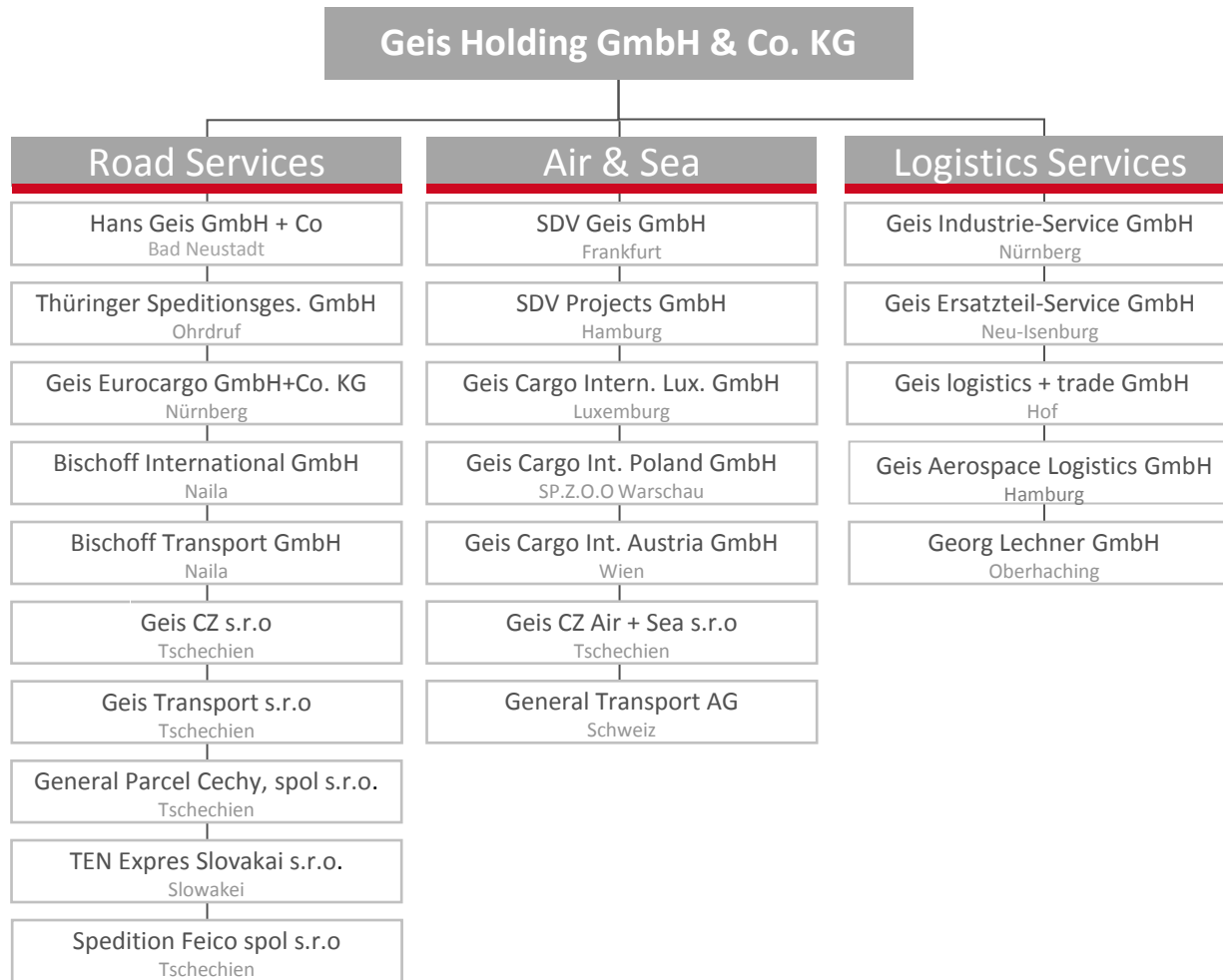
SHAREHOLDER – BOLLORÉ GROUP



Bolloré Group



SHAREHOLDER – GEIS GROUP



GERMAN AND EUROPEAN NETWORK



Gut ausgebaute Infrastruktur

Deutsches Netzwerk

In Deutschland sind wir mit

10 Niederlassungen und

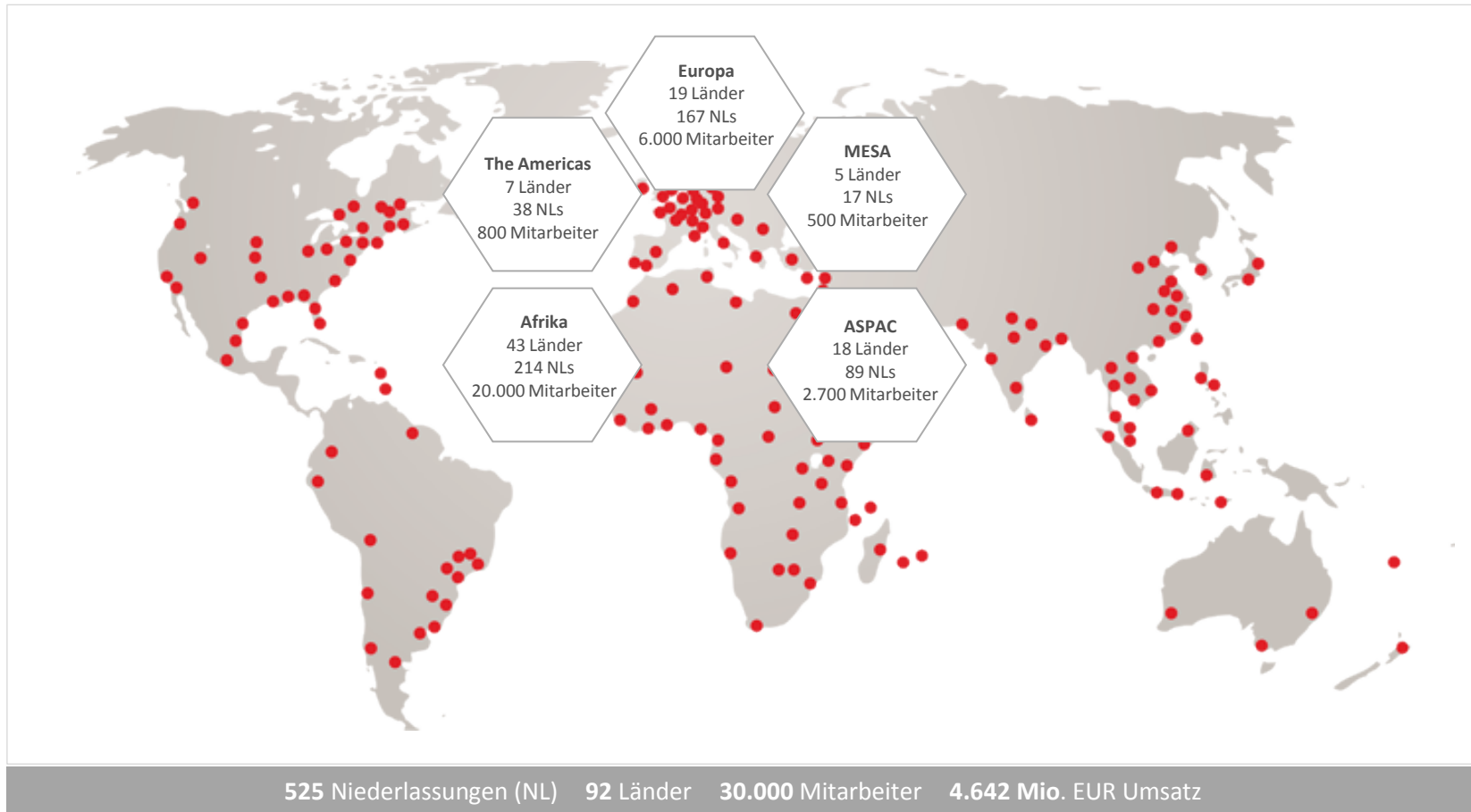
330 Mitarbeiter erfolgreich
vertreten.

Europäisches Netzwerk

167 Netzwerk- und Logistik-
standorte in **19** Ländern
Europas.

Wir sind da, wo Sie uns
brauchen!

NETWORK WORLDWIDE



*Stand 31.12.2010

SERVICE PORTFOLIO - SDV PROJECTS

- ⊙ Handling of turnkey projects worldwide
- ⊙ Project conception, consulting & execution of heavy loads
- ⊙ Transport by road, air and sea
- ⊙ Organization of special permits
- ⊙ Route upgrading
- ⊙ Special transport packaging for oversized freight items
- ⊙ Surveys
- ⊙ Accompanied transportation
- ⊙ Dismantling and assembling
- ⊙ Foundation delivery
- ⊙ Track & trace „Ari@ne”
- ⊙ Processing of customs and insurance modalities

TURNKEY & DDU PROJECTS

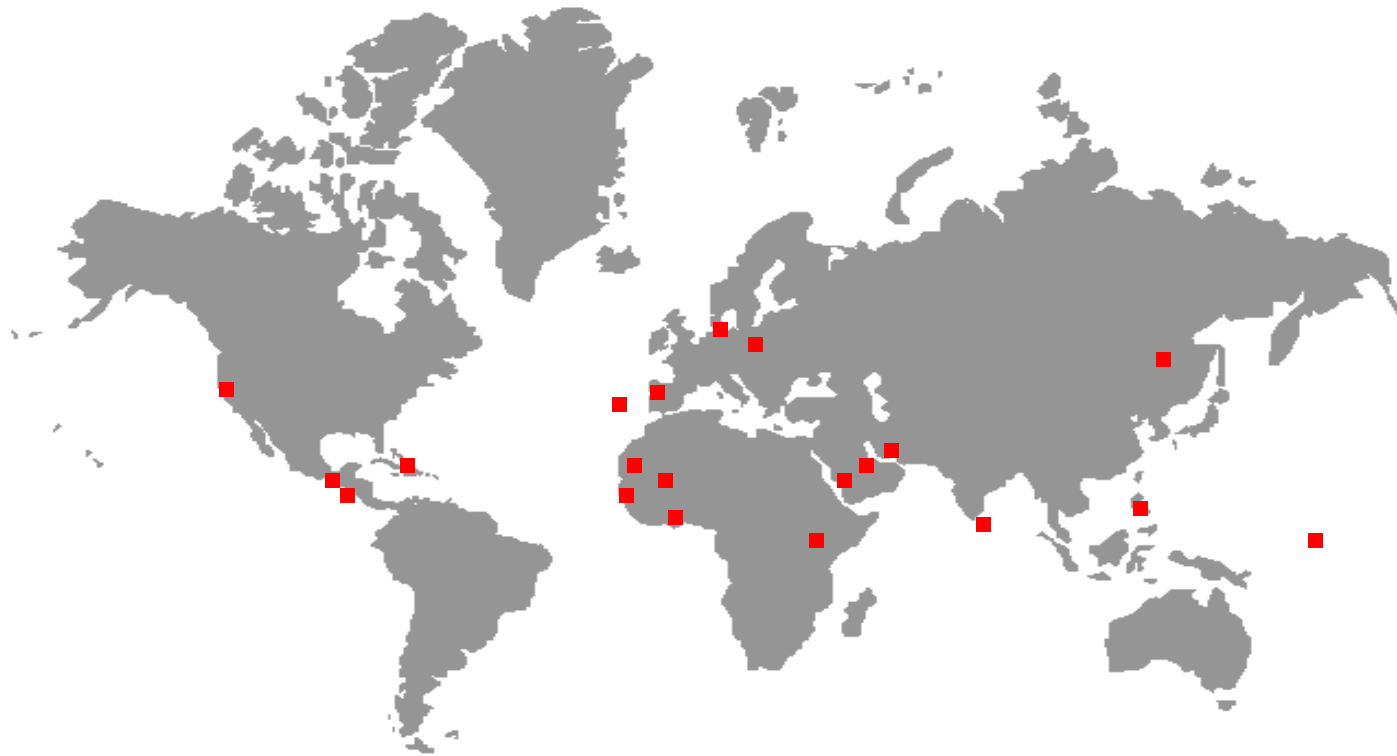
Transportation of various power plants:

- ▶ to Canary Islands, China, Dominican Republic, Guatemala, Mauritania, Nicaragua, Philippines, Romania, Saudi Arabia, Sri Lanka, Suriname, USA, Kuwait, Pakistan etc.

Further turnkey/DDU projects executed by SDV Projects Germany:

- ▶ Transformer Stations Mali & Senegal
- ▶ Gold Mine Ghana
- ▶ Copper Mine Laos via Thai Ports
- ▶ Transmission System Rwanda
- ▶ Air Separators Germany
- ▶ Brewery Nigeria
- ▶ Car Plant Czech Republic
- ▶ Transmission Line USA, India + Tanzania
- ▶ Diesel Power Plant Djibouti
- ▶ Autoclave Korea / Nordenham
- ▶ Cement Plant Poland to Russia

SITES OF TURNKEY PROJECTS WORLDWIDE



POWER BARGE USA - GUATEMALA



RIVER CROSSING COLOMBO/SRI LANKA



BRIDGE REINFORCEMENTS DOM. REPPUBLIC



DOMINICAN REPUBLIC



DELIVERY ONTO FOUNDATION - MAURITANIA



FUERTEVENTURA / CANARY ISLANDS



CZECH REPUBLIC



CHARTER TO LAOS VIA THAILAND



LANZAROTE







TANZANIA











CROATIA - THAILAND



POLAND - RUSSIA



PAKISTAN



AUTOCLAVE FROM KOREA - NORDENHAM



QUALITY MANAGEMENT & SERVICE

- ⊙ Certificate: DIN EN ISO 9001: 2000
- ⊙ Regular internal audits by our customers guarantee compliance of regulations and support continuous process improvement
- ⊙ Policy territory:
 - ▶ International Air and Sea Freight, Development and Implementation of Client-specific Services in the Context of Projects and Distribution Logistics

TERMS & CONDITIONS

Business is handled on the Basis of the "German Forwarders' Standard Terms and Conditions (ADSp)" latest edition only.

Please be informed that as by clause 23 of ADSp the liability of the forwarding agent at loss of damage of the merchandise is limited in general cases to the amount of € 5 per kg net weight of the shipment and that in the case of a shipping contract with combined transports and at extended damages there is a limited liability of 2 SDR per kg. Per claim the liability is limited to € 1 Mio. or 2 SDR per kg, whichever is the higher.

ADSp can be looked at on our website: <http://www.sdv-geis.com/en/downloads>

YOUR CONTACT

For further information please contact:



Heinz Niclas
Managing Director

SDV Projects GmbH

Obenhauptstr. 11

22335 Hamburg

Telefon +49 40 500 19-511

Fax +49 40 500 19-518

Email: info@sdvprojects.de